

DRS JumpStart lets you "hit the ground running" with a well-populated database of bike industry items and suppliers.



DRS JumpStart™ for Bike-alog® for Microsoft® Retail Management System

DRS JumpStart allows Bike-alog subscribers to import items into a Store Operations database from Bike-alog, a bicycle industry product database. JumpStart is the only import utility with a direct interface to Bike-alog, a DRS exclusive for Microsoft RMS. JumpStart also works with direct linked suppliers including Giant Bicycle, Quality Bicycle Products, Hawley Company, J&B Importers, and more.

JumpStart can be run in POS and Manager, or as a standalone application on a backoffice workstation. A subscription to Bike-alog is required for Bike-alog vendors.

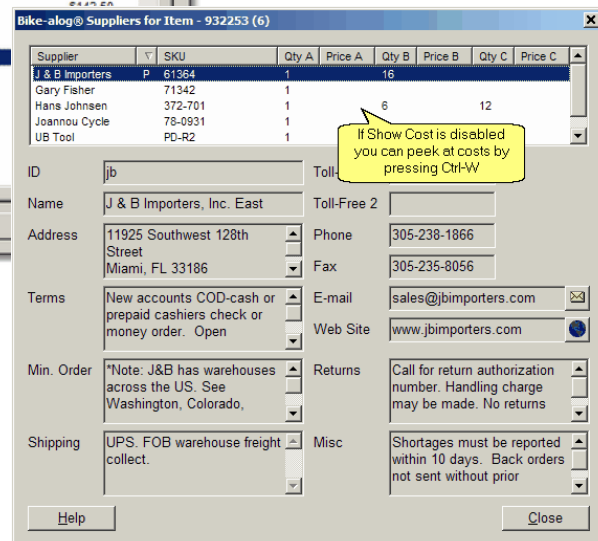
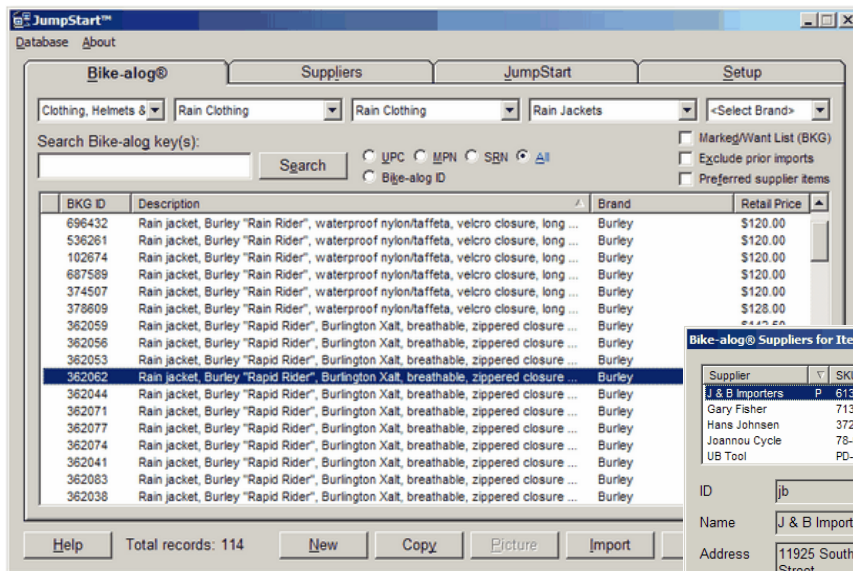
JumpStart is designed to work with Store Operations or HeadQuarters Manager in a HeadQuarters environment. In a single store environment JumpStart is installed on PCs running Store Operations. In a HeadQuarters environment, JumpStart

Use DRS Jumpstart to:

- Quickly search Bike-alog directly from within Store Operations or HeadQuarters
- Import items from Bike-alog on demand, including supplier sources
- Add Bike-alog Want List items to RMS in seconds
- Search Bike-alog suppliers for contact information
- Import Bike-alog supplier data with contact and extended information
- Load bike models into size/color matrices in a few clicks (with photos)
- Add new items including matrix creation (Bike-alog connection not required); copy option for quick adds
- Import/update product catalogs from participating direct-linked suppliers (Bike-alog subscription not required); includes warehouse stock check plus batch and matrix import

60-day Free Trial

All upgrades to DRS JumpStart are included with your annual maintenance plan (AMP)



Digital Retail Solutions || 800-322-9471 Canada: 800-353-0268 || www.digitalretailer.com

Copyright © 2005-2011 Digital Retail Solutions Inc. All rights reserved. Microsoft and Microsoft Retail Management System software are a trademark or registered trademarks of the Microsoft Corporation in the United States and/or other countries. Other trademarks or products mentioned herein are the property of their assigned owners.