

Powerful search and matrix capabilities make DRS Power Ops the powerhouse add-in for **real** inventory control!



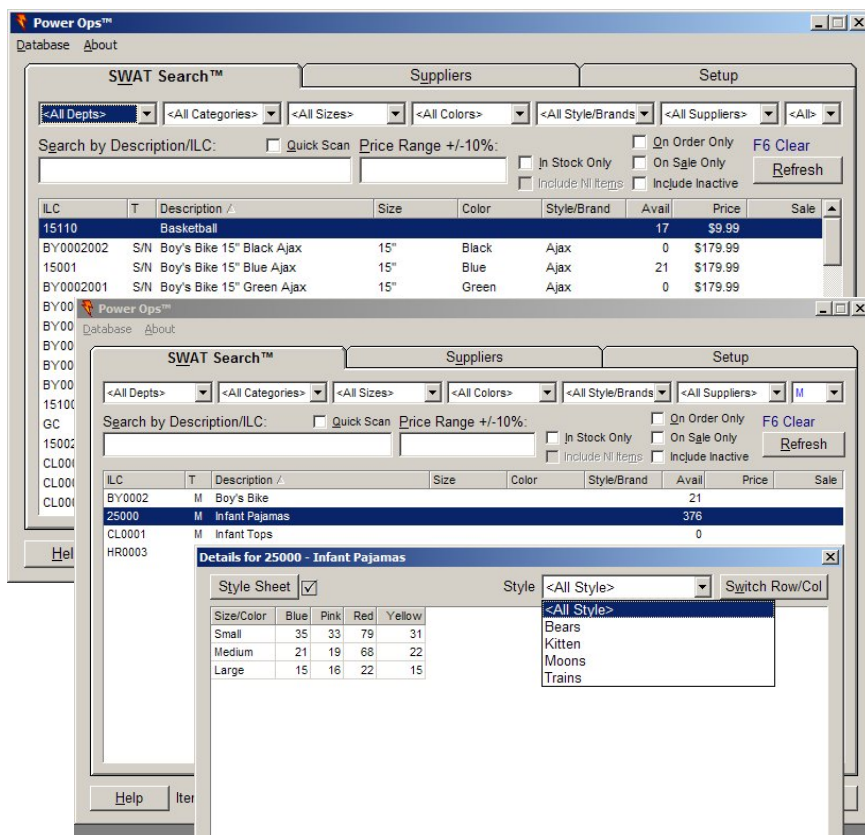
DRS Power Ops™

for Microsoft® Retail Management System

DRS Power Ops provides enhanced search capabilities, matrix management, custom ILC generation, pricing tables, new item wizards, and quick access to suppliers at POS.

Power Ops is an expanded all-purpose utility based on our original DRS SWAT Search™ add-in. Key additions include matrix management and new item creation tools.

Power Ops is designed to work with Store Operations or Store Operations in a Headquarters environment. Power Ops can be installed on any PC with access to RMS database. Add to Sale function is available when installed at a POS station.



DRS Power Ops is available bundled within DRS Bicycle Bundle 2006, Outdoor Bundle 2006, RMS Toolkit, and DRS Matrix Master.

Use DRS Power Ops to:

Set up defaults:

- Auto-generate item lookup codes based on pre-defined formats
- Create style sheets to easily manage matrix items in 1-3 dimensions
- Assign a margin/markup table to calculate regular price, ABC, lower/upper bound with rounding
- Format list views in grid style with lines and/or alternate row background

Create/edit items:

- Add/copy new items using a quick entry form with complete data entry in one screen
- Enter multiple dimensions in seconds with style sheets; add to a matrix 3 easy ways
- Change matrix item descriptions/prices in batch
- Build matrix style sheets from existing items
- Add child items when the parent item is created

Search/Find:

- Intelligent search eliminates need to select fields
- Locate items by filters: Dept, Category, Sub-description 1-3, Supplier, Type
- Locate items by search strings including % (followed by) or & (and) logic or exact (=)
- Search for multiple strings separate by commas
- Limit listing to items on POs (open or partial) , in-stock, or SALE items
- Locate items by price point or price range
- Check stock availability at participating suppliers (requires DRS Linker™)
- Quick scan by ILC, SRN, or Alias only

Display/View/Print:

- Include non-inventory and inactive items
- Item image in large or small with Notes
- View on hand, committed, and pending quantities
- View start/stop sale dates or discount schedule
- View all items details from one screen with drill-down to Alias, Offline, and Supplier/SRN entries
- Use hot keys to filter items by type: matrix class, matrix components, non-inventory, assemblies, kits, or serialized items
- View matrix by total units or detailed matrix grids
- View on order details for items from within POS
- View detailed supplier info from POS with quick links to website and email
- Print barcode labels with one keystroke (Cognitive and Zebra/Eltron barcode printers)

Sell in POS:

- Perform multiple search and tag in one session
- Tag multiple items and assign quantities
- Locate and sell serialized items; select SN
- Assign serial number to layaways or work orders

Digital Retail Solutions || 800-322-9471 Canada: 800-353-0268 || www.digitalretailer.com

Copyright © 2006 Digital Retail Solutions Inc. All rights reserved. Microsoft and Microsoft Retail Management System software are a trademark or registered trademarks of the Microsoft Corporation in the United States and/or other countries. Other trademarks or products mentioned herein are the property of their assigned owners.